

Manufacturers & Exporters

Measuring & Sensing solutions

Water Quality / Process Industry



pH / ORP

Conductivity

TDS

Temperature

RPM

Optical DO

Data Loggers



GLOBAL ELECTRONICS

3-5-331, NARAYANGUDA, HYDERABAD-500029. INDIA

PH:+91 40 2322 1391,2322 6687 Mob: +91 98499 85306 email:info@ge-india.com URL:www.ge-india.com

LAB INSTRUMENTS

Lab pH Meters



DPH 500

- Rugged Laboratory Grade pH / mV meter
- Large easy to read LED Display
- Manual Temp. Compensation
- Table top, Mains operated

- Rugged Laboratory Grade pH/mV meter
- Large easy to read LED Display
- Built in Digital Thermometer
- Automatic / Manual Temp. Compensation



DPH504



DPH507

- Microprocessor based pH / mV meter
- Large easy to read Dual LED Display
- 3 Point Calibration
- User selectable NIST / USA Buffer set
- Automatic / Manual Temp Compensation

- Microprocessor based pH / mV meter
- Large easy to read Dual LED Display
- 3 Point Calibration with Automatic Buffer recognition
- User selectable NIST / USA Buffer set
- Automatic / Manual Temp. Compensation
- RS 232C Computer Interface**
- 100 point built in Data Logger**
- Built in Real Time Clock**



DPH507 PLUS

Lab Conductivity / TDS Meters



DCM900

- Rugged Laboratory Grade instrument
- Manual Temp. Compensation
- 20 uS to 200 mS FS in 5 ranges
- Cell constant compatibility of 1.0 / 0.1
- Table top, Mains operated
- Option of Conductivity / TDS display

PH STAT SYSTEM



DPH 514

This is specially designed for critical pH control in Laboratory processes and process development

The pH STAT uses a highly advanced pH control algorithm to deliver very accurate pH control using the very minimum of required dosing chemicals. The control algorithm can achieve pH control within 0.05 pH units of the desired value, thus greatly enhancing the product quality.

- Displays pH / ORP, Temperature & Dosing Time
- Benchtop SS Enclosure
- Compact Stand alone pH Control system with Peristaltic dosing pumps in SS Enclosure
- Microprocessor based, Real Time Fault Tolerant Design.
- User Selectable pH or ORP Control Mode
- Advanced Signal conditioning provides exceptionally stable reading which adapts to virtually any Titration curve.
- Extremely tight pH control with fast response and Batch processes.
- Simple, low cost & easy to maintain ON / OFF Control elements used
- User selectable NIST or US Buffer set for Calibration
- Powerful 3 Point / 5 Point Software Calibration with Automatic Buffer recognition and Buffer pH Compensation for Temperature
- "Electrode Condition Monitoring" with warnings for poor electrode condition.
- "Control Halt" switch for Start & Stop of Titration.
- Available in Single & Dual Pump Versions

Applications

- Process development experimentation for manufacturing process optimization
- Regular laboratory processes like Buffers and Solution preparation.

FREE CHLORINE

Our free Chlorine measurement range offers instruments and sensors to analyze free chlorine in solution



- The Sensors of Van London Co,USA, for the measurement of Free Chlorine, Chlorine dioxide and
- Potentiostatic measurement
- Linear current/concentration relationship
- No need for frequent zero and sensitivity calibration
- Very stable zero value in oxidative absence.
- The sensor is easy to clean and replace.

TURBIDITY

High Turbidity and suspended solids probe with 4-20 mA & RS485 output

This unique submersible probe has been designed to measure the high turbidity and suspended solids based on back scattering technology



2 wire 4-20 mA Isolated Analog Output
Can be connected to PLC or Data Logger

Applications :

- Water Quality Monitoring
- Industrial Water Treatment
- Aquaculture

NEW LINE OF WATER PROOF ANALYTICAL INSTRUMENTS



HAND HELD METERS

20mmx32mm large LCD Screen with energy stored backlit for easy reading

A wide range of applications to meet water quality measurement in Field / Laboratory / Process

Replaceable electrode with self diagnostic function of the electrode characteristics

Energy saving design and memory function

Optional exquisite carrying case. easy to carry and operate.



DO Tester

**Free Chlorine
Tester**

pH Tester

**Conductivity /
TDS Tester**

PROCESS PH / ORP

pH / ORP Indicator



**DPH 509
Panel Mount**

- ❑ True Differential Input system with Solution Ground referencing to eliminate Ground Loop Problems
- ❑ High performance design for use in difficult samples - Ultrapure Water & Partially Aqueous media
- ❑ Available in Panel Mount, Wall Mount & Flameproof Enclosures
- ❑ 4-20mA Output



**DPH 509
Flameproof
(Truly Flameproof)**

pH / ORP Controller



DPH 510

- ❑ True Differential input measurement system
- ❑ Solution Ground referencing eliminates Ground Loop problems
- ❑ High performance design for use in difficult samples like Pure Water
- ❑ 2 Set point ON OFF / Dead band Control
- ❑ Available in Panel Mount, Wall Mount & Flameproof Enclosures
- ❑ 4-20mA Output



DPH 510 FLP

pH / ORP Transmitter



**DPH 512
Flameproof
(Truly Flameproof)**

- ❑ True Differential Input system with Solution Ground reference
- ❑ 24V DC Operation
- ❑ Ground referenced 4 - 20mA output
- ❑ High performance design for use in difficult samples - Ultrapure Water & Partially Aqueous media



**DPH 512
Panel Mount**

PROCESS pH / ORP

Advanced pH / ORP Controller



DPH 513

Model DPH 513 is specially designed for Batch pH Control in Pharmaceutical & Water Treatment applications. The special control algorithm developed for pH control has proved itself over thirty years in critical Enzymatic reaction applications.

- Advanced Dual Mark Space Control Algorithm for precision control
- Minimum use of Dosing reagents
- Simple ON/OFF Control Elements
- 3 Point & 5 Point Electrode calibration for high sensitivity applications
- Solution Ground referencing to eliminate Ground Loop problems
- High performance design for use in difficult samples like partially aqueous media
- Automatic / Manual Temperature Compensation
- Digital input for Control HALT
- RS 485 MODBUS RTU Communication / 4-20 mA Output
- Available in Panel Mount, Wall Mount & Flameproof Enclosures

DIGILOG pH/ORP Transmitter

'Digi' represents all the features of digital pH Transmitter and 'Log' represents the connectivity with standard analog electrode which will drastically reduce the replacement cost of electrode and logging of your calibration data

- Works with any analogue pH Electrode which will reduce the replacement cost
- Data Management: in-built storage of calibration data
- RS 485 or 4-20mA output for connecting to HMI or integrating with SCADA
- Auto-buffer recognition
- Available in Certified Flameproof Enclosure
- Microprocessor based instrument
- Supports more than 3000 types of Electrodes with different applications



DPH 515

pH / ORP Isolator



ISO 160

Global's pH & Temperature Isolator Signal Conditioning Module is designed for isolating pH Transmitter's signal to On-line Indicator / Controller.

It uses up to four levels of isolation to eliminate ground loop problems and induced field noise

PROCESS CONDUCTIVITY / TDS



DCM 910

- High performance design for use in difficult samples like Pure Water
- 20µS to 2 S ranges
- TDS display option
- 2 Set point ON OFF /
- Dead band Control
- Ground referenced 4-20mA / 0-10V output for Data Acquisition

CONDUCTIVITY CELLS FROM VAN LONDON Co., USA



- In-Line Installation
- Temperature Compensation
- Treated 316 Stainless Steel Body
- Cell Constant Validated At The Factory
- C621: IP 65 Detachable Plastic Cable Connector
- C621H: NEMA 4 Aluminum Threaded Terminal Box
- Temperatures Sensors: 10K NTC, Pt100 and 1000

- In-Line or Submersible Installation
- Temperature Compensation
- Treated 316L Stainless Steel Body
- Cell Constant Validated at the Factory
- 10 Foot Leads with Spade Lugs
- Temperature Sensors: 10K NTC, PT100, or Pt1000



Torroidal Conductivity Cell



Torroidal Conductivity is perfect for applications that would foul or attack the metal of contacting sensors

Low cost
Durable Polypropylene construction
Submersible or in-line mounting
Ease of maintenance

Process Conductivity Cell

- Concentric 2 electrode Cells
- Cell Constants of 1.0 0.1, 0.01
- Versions for Temperatures upto 205°C
- Available in SS 316 Housing



TEMPERATURE INDICATORS AND CONTROLLERS



DTM 700



TI700



TI701

- PT100 input Linearised to 0.25% w.r.t. Temperature
- Flame proof Gas Gr. IIA, B, Weatherproof IP56
- High visibility LED display
- Easy 2" pipe mounting
- Ground referenced 4-20mA DC retransmission output for Data Acquisition
- Compact Temperature Indicator
- Certified Flameproof, IS/IEC 60079-1, Gas Grp. IIA, IIB
- Range : -200°C to 500°C with 0.1°C resolution
- Password Protected
- Flameproof wit Magnetic Key for "EXTERNAL SOFTWARE CALIBRATION"
- RS485 OR 4-20 mA for Data Logging
- Relay or Alarm Buzzer
- In built Lead Resistance Compensation Circuit

EXTERNAL CALIBRATION
FOR TRUE FLAMEPROOF OPERATION
NO COMPROMISE ON SAFETY

CUSTOM RTD / THERMOCOUPLE SENSORS



- RTD / Thermocouple Sensors
- Type K /R/ J Thermocouple Sensors
- Pencil Type, Flat Leaf sensors also available
- Availilabel in Flameproof head

DUAL CHANNEL TEMPERATURE INDICATOR



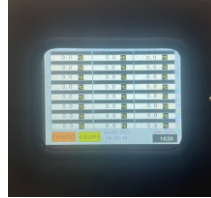
- Universal Input
- Dual Analog Input
- Certified Flame Proof IS2148-2004, Gas Gr. II A,B
- High Precision, High Accuracy
- Sensor Linearization better than 0.25% FS
- Wide Range of Measurement
- Supplied with Calibration Certificate traceable to NABL

SCANNERS & DATA LOGGERS



DTM 705

- PT100 input Linearised to 0.25% w.r.t. Temperature
- 4,6,8 or 10 Channels
- AutoScan / Hold / Manual modes
- Individual channel Zero calibration
- Panel / Wall mount / Flameproof



PAPERLESS DATA LOGGERS

- TFT Touchscreen Display
- Data logging-32000 per channel is secured
- Available in 8 or 16 universal input (RTD, Thermocouple 0-5Vdc, 0-20mA or 4-20 mA input signals.)
- Parallel Port to connect to dot matrix printer
- Two relay outputs Individual Alarm relay (HI / LO)
- Additional relay outputs with optional Relay card
- Networkable using Ethernet Port (optional)
- Free PC Based Data Acquisition software
- 21 CFR Part 11 (optional)
- 3.5 inch TFT with Touch Screen Control
- Front end IP65 protection
- USB Port (Memory stick)

PROCESS INDICATORS



- Dedicated RPM indication
- Three Analogue inputs to connect (Temperature/pH/RPM/TDS/DO etc)
- Output RS 485 MODBUS RTU PROTOCOL
- Emergency Stop Button
- Flameproof Enclosures

BATT OPERATED WIRELESS TEMP / RH DATA LOGGERS



2 CHANNEL ANALOGUE INPUT DATA LOGGER WITH SOFTWARE AND WIRELESS TRANSFER TO PC



RPM INDICATORS



- Start Push Button with NO contact
- STOP Push Button with NC contact
- Multiturn Potentiometer for Speed Setting
- Digital Speed Indicator

PID CONTROLLERS



- Control of Temperature, Humidity, Pressure, Flow and pH
- PID + Fuzzy algorithm for excellent control
- Built in Bar Graph Display
- Advanced options like Motor Valve Control, SCR/TRIAC trigger and Programmable RAMP/SOAK

Available in all sizes and configuration

ONLINE OPTICAL DO METER & SENSORS



**Turbidity
Sensor**



**Optical
DO Sensor**

Wireless multi parameter Water Quality Monitoring Systems

- This sensor is based on Optical Fluorescence lifetime quenching technique
- Its technical procedure meets ASM D888-09 standard for optical sensing of Dissolved Oxygen
- Digital Communication capabilities allow to integrate into various platforms quickly & easily

LAB OPTICAL DO



- Wireless multi-parameter water quality monitoring system.
- The system can monitor dissolved oxygen, conductivity, turbidity, pH, and Temperature simultaneously through wireless networks.
- The data collected by various sensors can be monitored in-situ remotely.
- The system can be powered up by either 110/220V AC power or by solar panels.

PH/ORP/DO/ISE ELECTRODES FROM VAN LONDON Co., U.S.A

3000 TYPES OF PH ELECTRODES FOR EVERY APPLICATION



Van London Company established in 1961 by Gregory S. Van London, has been dedicated to providing products & services to meet or exceed customers' expectations. With their **50** plus years of manufacturing and applications expertise, and their continual process of improvement and innovation, they are delivering a wide range of **pH, ORP, ISE, DO Electrodes**, to the complete satisfaction of their customers.

Their new innovative **Green GX V Glass, Solid Polymer Reference and Z Gel Open Pore Reference** are standing examples of their commitment to innovation.

JUST THINK GREEN for the best pH Glass Formula

CONDUCTIVITY CELLS



Sole Distributors in India:

VAN LONDON Co., U.S.A

Process pH Controller

pH Temperature measurement
0-14 pH and 0-100oC
Dual 4 Digit LED Display
Auto / Manual Temperature Compensation
3 point Auto Calibration for buffers
Error Indication for Buffer range and Slope error
RTD Temperature Sensor



OPTIONS:Relay Output, Control Set Point Logic,Current O/P, MODBUS O/P

Process Conductivity Controller



Conductivity Temperature measurement
Single Range as per requirement
Manual Single Point calibration
Calibration range - 30% of display reading

OPTIONS:Relay Output, Control Set Point Logic,Current O/P, MODBUS O/P

PRODUCT LINE



GLOBAL ELECTRONICS

3-5-331, NARAYANGUDA, HYDERABAD-500029. INDIA

PH:+91 40 2322 1391,2322 6687 Mob: +91 98499 85306 email:info@ge-india.com URL:www.ge-india.com